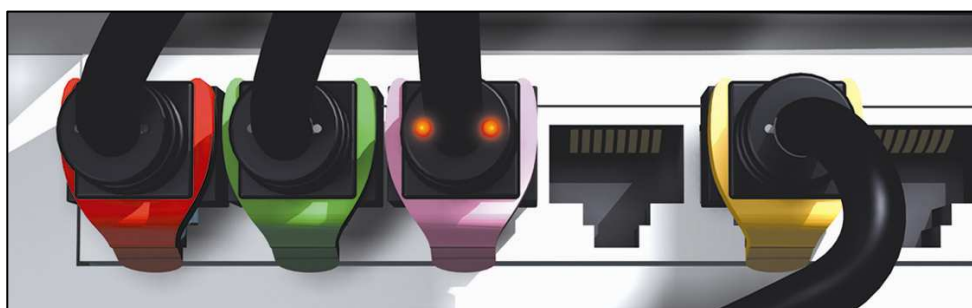


# **PCI6Patch**

## **Cat 6 UTP RJ45 patch cords**

### **Technical Data Sheet**

**Patent Pending**



#### **Cat 6 RJ 45 Patch Cords :**

**PatchSee** RJ 45 Patch Cords are designed, and individual tested for connecting the network equipment to patch panel and network users outlet. They are warranted for cat 6 TIA/EIA-568-B-2.1 June 2002 and ISO/IEC 11801 Channel test on a Permanent Link certified for transmission frequencies of up to 250 MHz and **designed to be compatible with the 10 GigaBits applications.**

#### **PatchSee Concept and main characteristics**

- Light identification by plastic optical fiber,
- PCI (Patchsee Connector Insert : Owner PatchSee)
  - o designed to improve NEXT and RL for 10 Giga Bits applications,
  - o designed for high density panels and active components (same size as the plug in width and height)
- Warranty 25 years for Channel Cat 6 link on Cat 6 Permanent Link certified and ready for 10 GigaBits applications,
- Individual tested: each Patch Cord is individual tested (Return Loss, Attenuation, NEXT, etc...) and all the reports tests are archiving on computer database.
- Many lengths 2 feet (0.6 m) up to 16 feet (4.9 m)for patch panel and terminal link,
- Color cable: Black with white marking,
- Color boot: Grey with white marking,
- Movable color clip, 16 colors available,
- Packaging: boxes of 6 or 12 pieces, depending of the length,
- Available in cross patch cord,
- Marking on the boot: length and P/N,
- Unique serial number marking on the cable,

**Technical Data Sheet**

**Construction**

<b>Number of pairs</b>	4
<b>Type</b>	UTP with plastic cross web
<b>Conductor</b>	Stranded bare copper wire, 4 / 0.2 mm x 4 pairs
<b>Gage</b>	24 AWG
<b>Insulation</b>	Foam Skin Polyethylene
<b>Individual pair screen</b>	n a
<b>Pair screen</b>	n a
<b>Optical wave guide</b>	2 POF 0.5 mm
<b>Drain</b>	n a
<b>Jacket</b>	PVC Black with white printing
<b>Overall diameter</b>	6.0 +/- 0.2 mm
<b>Plug housing</b>	UL 1863 Polycarbonate individual wire guide and management bar
<b>Contacts</b>	Moved contacts
<b>Contact Plating</b>	50 μ inches gold minimum (1.2 μm)
<b>Shielding</b>	n a

**Mechanical Properties of the Cable**

<b>Fire Propagation Test</b>	<b>Temperature range During operation</b>	<b>Fire load</b>	<b>Bending radius</b>
UL 444 VW 1 Flame test	-20°C up to +75°C	372 MJ/km	>25 mm without load

**Electrical Properties of the Cable (at 20°C +/- 5°C)**

<b>Conductor resistance</b>	<b>Insulation resistance</b>	<b>Pair to ground unbalance capacitance</b>	<b>Impedance 1-100MHz</b>	<b>Impedance 100-250MHz</b>	<b>Propagation delay (1-250 mHz)</b>	<b>Test voltage in air</b>
< 94Ω/km	> 150 MΩ/km	Nom. 3.3nF/km	100 +/- 15 Ω	100 +/- 15 Ω	< 45 ns/100m	2000 V